

During 2007, the majority of long range planning work was temporarily suspended. This action was necessitated by the influx of 325 Ballot Measure 37 claims that were submitted between November 27 and December 4, 2006. To address this challenge, LMD's four long-range planners were shifted away from their regular duties to process these claims. In total, approximately 3.5 FTE of 4.0 FTE were diverted for a six month period. Following the Measure 37 hiatus, long-range activities resumed in the summer of 2007, but with a substantial reduction in staff resources.

From 2003 to 2007, LMD employed four long range planners. These positions were funded from a combination of sources including, grants from the Department of Land Conservation and Development, long-range planning surcharges assessed to planning actions and building permits, Title III funding (for qualifying projects) and economic development (video lottery) dollars.

In April 2007, the Economic Development Standing Committee elected not to award LMD's request for renewal of a Video Lottery General Allocation Grant to support long-range activities in 2007-2008 Fiscal Year. The loss of vid-lot funding required LMD to eliminate two long range planning positions. Fortunately, these positions were eliminated through attrition with the resignation of Steve Hopkins and the retirement of Bill Sage. There are presently two long range planners on staff which, are overseen by the Planning Director. Attachment "A" to this memo is a current organizational chart of the LMD – Planning Program.

B. Policy Issues

The loss of two permanent FTE within the Long Range Program has reduced the capacity of LMD to carry out multiple complex projects while simultaneously providing support and coverage for permit processing activities.

There are currently twenty proposed long-range projects for the 2008-2009 Fiscal Year. These projects are listed on the matrix included as "Attachment B". The matrix identifies projects that are continuing as well as those projects that are expected to be completed during the 08/09 FY. The matrix also lists the anticipated FTE required to carry each project and identifies the relative priority recommendation that staff have assigned to each project. The staff priority recommendations are based on several factors including: the availability of potential grant funding, continuity with ongoing projects, state mandates and input from other agencies and the general public. More detailed descriptions of each of the projects listed on the matrix can be found in "Attachment C".

The proposed projects for the 2008-2009 Fiscal Year address a range of important topics. Staff has estimated that approximately 4.35 FTE would be required to carry out all identified projects. Only 2.4 FTE are available to work on these projects. This includes two full time planners and a portion of the Planning Director's time. The Board will need to determine which projects should be given priority and which of the proposed projects will need to be shifted to the next fiscal year or eliminated.

C. Board Goals

Many of the Long-range projects identified for possible implementation align with one or more of the following Board Goals: 1.3 Promoting electronic access to public services, 2.2 Information technology and 3.3 strengthening analytical capabilities.

In addition to the identified Board Goals, the proposed projects are intended to address the needs and objectives of the greater community. More information on the intended outcomes of each project can be found in the project descriptions included in "Attachment C".

D. Financial and/or Resource Considerations

Revenues for the Long-Range Planning Program in the 2008-2009 FY are projected at \$323,500.00. This figure is based on a 10% long-range surcharge that is assessed to all planning actions and certain building permits requiring land use review. This projection is an estimate only and assumes a slight (2%) forecasted reduction in permit activity from the current year. This anticipated 2% reduction is predicated on recent downturns in the local construction and land development industries.

As discussed above, 2.4 FTE are available to work on long-range activities. Funding for these FTE would be fully covered by the \$323,500.00 in expected revenues. If the Board chooses to assign a work plan that is consistent with LMD's staffing/ financial constraints, then current projected revenues will suffice. If the Board would like staff to pursue a more complete work plan, then additional resources will be required.

On April 10th, LMD will be meeting with the Finance and Audit Committee to discuss the results of a recently completed fee study. LMD contracted with MAXIMUS, INC. to conduct an analysis of the division's fee structure and to determine if the division is realizing a full cost recovery for the services that it provides. Following the report to F&A, staff intends to meet with the Board in early May to discuss any necessary adjustments to the fee structure. As part of that discussion, staff will present a range of potential fee adjustments and scenarios. One such scenario will likely be a substantial modification to the long-range surcharge. A significant surcharge increase would enable LMD to fully fund an additional long-range position and would provide the County increased capacity to address needed regional planning issues and regular RCP updates.

In addition to funding generated through the surcharge, the Long-Range Planning Program has been actively seeking funding from other sources. For the 2008-2009 FY, LMD has applied for a \$30,000 Technical Assistance Grant from the Department of Land Conservation and Development (DLCD). If awarded, the grant could be used to help offset costs incurred in the development of Phase II of the Dredge Material Disposal Plan Update (described on page 3 of Attachment "C"). As of the date of this memo, the status of this grant is not yet known.

LMD has also been involved in discussions with the Parks and the Transportation Planning / Traffic Divisions concerning the Parks and Open Space Master Plan Update (described on page 5 of Attachment "C"). Until recently, Transportation Planning had been assisting Parks with the development of the plan update. An internal promotion within Transportation Planning has created a vacancy in the division's only planner. LMD has been asked by the Transportation Planning & Traffic Manager to consider assisting with the project. Up to \$30,000 is available from the Parks Division for this assistance.

Finally, the Eugene Water and Electric Board has pledged to dedicate staff time and resources and up to \$10,000 in funding to reimburse the County for staff time associated with the proposed drinking water source protection planning activities described on pages 1 and 2 of Attachment "C".

E. Analysis

Approximately 4.35 FTE would be required to carry out all identified projects. Based on current funding and staff levels only 2.4 FTE are available. A Prioritization Analysis Worksheet, included as "Attachment D", has been provided to assist the Board in their decision making. Staff is requesting that the Board complete the worksheet and prioritize the projects. LMD will undertake the highest ranked projects as permitted by staff resources, if additional resources become available, or if projects are completed ahead of schedule, LMD will progress down the prioritization list.

F. Alternatives/Options

The Board may choose to:

1. Prioritize the projects and / or;
2. Suggest alternative projects and priorities or;
3. Refrain from acting and direct staff to provide additional information

G. Recommendation

Staff recommends that the Board choose Option 1.

IV. TIMING/IMPLEMENTATION

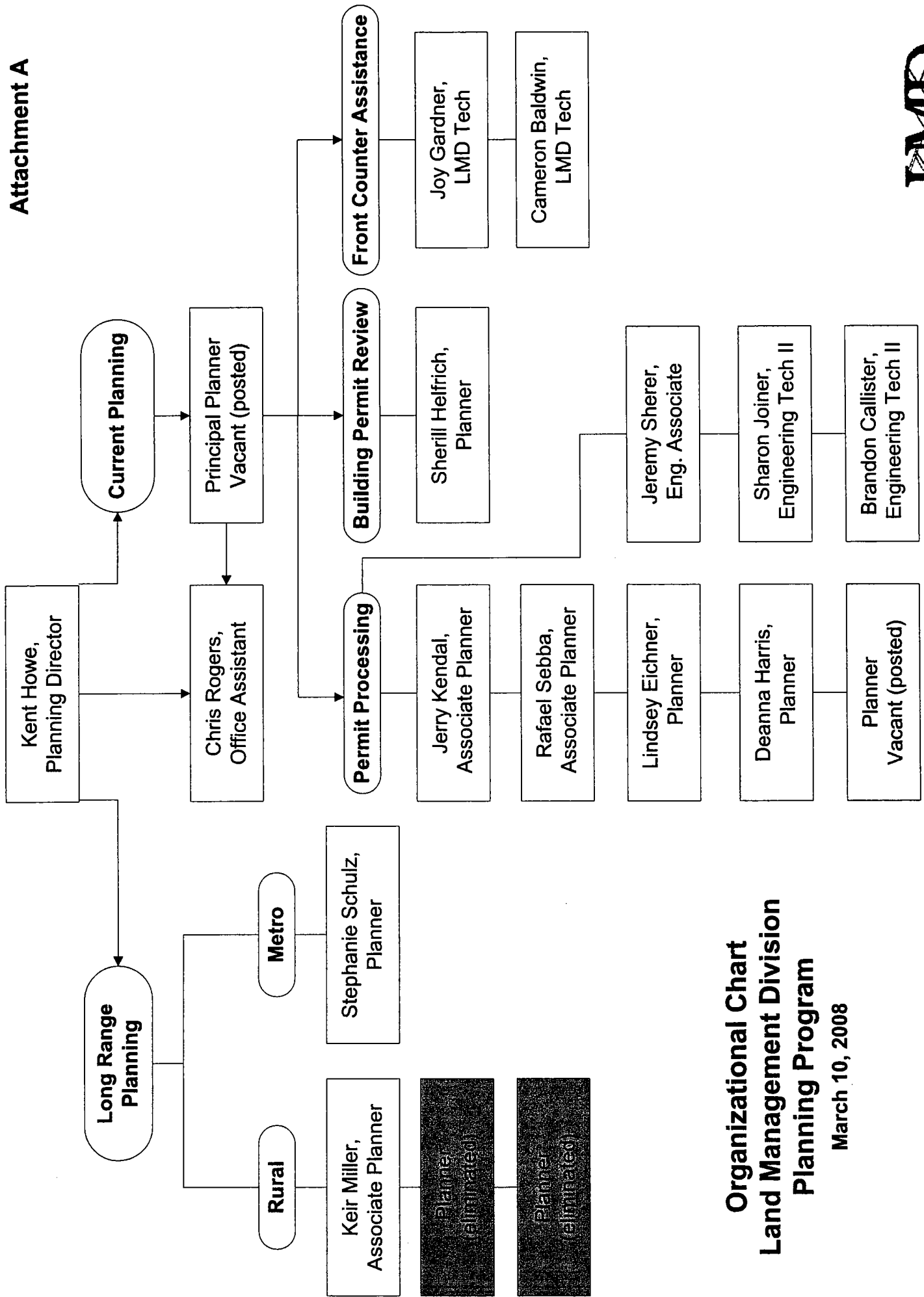
The chosen alternative including priorities will be implemented at the direction of the Board.

V. ATTACHMENTS

- A. LMD Planning Program Organizational Chart
- B. Proposed Projects Matrix for the 2008-2009 Fiscal Year
- C. Proposed Projects Descriptions
 - Exhibit 1 to Attachment C: Letter of support from the Leafwood Water Assoc.
 - Exhibit 2 to Attachment C: Letter of support from the Oregon DHS
 - Exhibit 3 to Attachment C: Letter of support from the Springfield Utility Board
 - Exhibit 4 to Attachment C: Letter of support from the City of Creswell
 - Exhibit 5 to Attachment C: Letter of support from the City of Florence
 - Exhibit 6 to Attachment C: Letter of support from SWVGMA Committee
 - Exhibit 7 to Attachment C: Letter of support from LCOG
 - Exhibit 8 to Attachment C: Letter of support from Oregon DEQ
 - Exhibit 9 to Attachment C: Letter of support from City of Cottage Grove
 - Exhibit 10 to Attachment C: Letter of support from EWEB
 - Exhibit 11 to Attachment C: Hearings Official Decision RE PA07-5572
- D. Prioritization Analysis Worksheet

Attachment B: Proposed 2008-2009 FY Local

Rural Planning Projects	Annual Project	Cost @ \$21.41 per hour
A. Drinking Water Source Protection Planning	No	\$4,453.28
B. Dredged Material Disposal Plan Update - Phase II	No	\$17,813.12
C. e-Government services maintenance (GIS & internet)	Yes	\$8,906.56
D. Parks Master Plan adoption	No	\$11,133.20
E. ODFW Coordination Wildlife Habitat Conservation	Yes	\$2,226.64
F. Revised Riparian Protection Provisions	No	\$6,679.92
G. Community Rating System - annual coordination and	Yes	\$6,679.92
H. County Flood Mitigation Plan Phase 1	No	\$13,359.84
I. Adoption of Dexter Public Facilities Plan	No	\$6,679.92
J. OWEB Grant Projects - Land Use Compatibility Re	Yes	\$2,226.64
K. Coordination - Community Wildfire Protection Plan	? - SRS Dependent	\$2,226.64
Metro & Small City Coordination		Cost @ \$22.44 per hour
L. Eugene Springfield Metro Planning Coordination	Yes	\$14,002.56
M. Regional Water Resources Planning	No	\$11,668.80
N. Special District Boundary Changes	Yes	\$7,001.28
O. Small City Coordination	Yes	\$16,336.32
P. Lane Code updates from 2008 land use legislation	No	\$7,001.28
Special Projects		Cost @ \$22.44 per hour
Q. Coordinated Population Projections	Every 5 Yrs	\$46,675.20
Miscellaneous Projects and Research		Cost @ \$35.00 per hour
R. Policy review of HO Decision regarding replacem	No	\$3,640.00
S. Concurrent processing of building permits & final	No	\$3,640.00
T. Measure 49 Referrals	No	\$14,560.00
Cost Subtotal:		\$206,911.12
Overheads (wage x 1.64):		\$339,334.24
Total:		\$546,245.36
Funding Deficit:		\$222,732.36



**Organizational Chart
Land Management Division
Planning Program**

March 10, 2008



Proposed Project Title:**A. Drinking Water Source Protection Planning****Project Description and Need:**

Safe drinking water is vital to the economic health and livability of Lane County communities. Public water systems in Lane County do an excellent job of treating water and distributing it safely to residents; however, effective water quality management requires more than just treatment. Source water protection is essential, and it can reap huge benefits to communities, including: proactive pollution prevention and decreased chances of losing drinking water sources to contamination; less expensive treatment of raw water; and greater financial security (the Environmental Protection Agency estimates that it is, on average, 27 times more expensive to deal with a drinking water contamination problem than to implement strategies for protection).

On October 29, 2007, representatives from 16 Lane County public water systems* met to develop ways in which Lane County could partner with the water systems to improve source water protection. The public water systems participating in the meeting collectively represented 252,033 water consumers, or approximately 75% of the Lane County population and 90% of the population served by all community public water systems in Lane County. The goal of the meeting was to identify shared source water quality concerns and generate a list of solutions that would be applicable throughout Lane County. Examples of the shared drinking water threats include:

- Storage and use of chemicals/hazardous materials and dense non-aqueous phase liquids (chlorinated solvents)
- Septic system operation (abandoned and in-use)
- Private well contamination of the local aquifer (abandoned and in-use)
- Nitrate sources
- Pharmaceuticals' and personal care products' persistence in surface and groundwater
- Hazardous material spills
- Land development effects (erosion, storm water runoff, riparian development)
- Sand & gravel mining operations

The participating water systems identified several potential actions for addressing drinking water threats. The actions below are a subset from that list and are the recommended first steps for County participation in drinking water source protection:

1) Integrate Drinking Water Protection into County Land Use Process

- Develop a county-wide map (and GIS layer) showing drinking water source areas.
- Notify public water systems of proposed development activity that falls within their source areas.

2) Promote Drinking Water Source Protection Education

- With the public water systems, develop educational materials that address drinking water protection topics and raise awareness about the importance of protecting source water areas. Distribute materials to developers, residents, and others through the web site, front counter, and mailings.

-continued

-A. Drinking Water Source Protection Planning, continued:

3) Explore Feasibility of Future Drinking Water Protection Efforts

Public water systems agreed on the *need* for County involvement. The rationale:

- The concerns described above are shared by a group that is responsible for providing drinking water to approximately 75% of the County population;
- In many cases the County, not the public water system, has land use jurisdiction over water source areas, so communities are dependent on County action to protect their drinking water sources;
- Compared to the other barriers that protect public health within a public water system, drinking water source areas are most vulnerable to the threat of contamination;
- When contamination of a drinking water source occurs, the damage is already done and rehabilitation of the source can be costly;
- Working with multiple water systems, rather than a single water system, will be more efficient and establish a uniform approach to water source area protection throughout the County.

Public water systems are interested in working with the County to protect drinking water sources. They recognize that county resources are limited and are willing to contribute staff time, technical expertise, and some funding to this effort. Statements in support of this effort have been provided by a number of districts and agencies and are included as Exhibits 1-10 to this project description.

*The Following Public Water Systems attended the October 29, meeting:

- | | |
|-------------------------------------|---------------------------------------|
| ▪ City of Coburg | ▪ Mapleton Water District |
| ▪ City of Cottage Grove | ▪ Marcola Water District |
| ▪ Country View Estates Water System | ▪ McKenzie Valley Presbyterian Church |
| ▪ City of Creswell | ▪ Oregon-Cascade RV Park |
| ▪ Eugene Water and Electric Board | ▪ Rainbow Water District |
| ▪ Giustina Land & Timber | ▪ Rosboro LLC |
| ▪ Gooden's Trailer Court | ▪ Springfield Utility Board |
| ▪ Leafwood Water Association | ▪ City of Veneta |

Products/Objectives:

- Develop a Drinking Water Source Protection Area map.
- Establish procedures for staff to notify public water systems of proposed land use actions within their source areas
- Develop and distribute education materials
- Identify future actions that the county could implement to address source water protection

Project Partners:

Eugene Water and Electric Board, Springfield Utility Board

LMD Priority:	High	Coordinating Staff:	Miller
FTE Required:	0.10	Anticipated Timeline:	August – December '08

Proposed Project Title:			
B. Dredged Material Disposal Plan Update - Phase II			
Project Description and Need:			
<p>Lane County adopted the Coastal Resource Inventory (Wilsey & Ham, October 1978) and the Siuslaw River Dredged Material Disposal Plan (DMDP) (Wilsey & Ham, November 1978) as part of Lane Code Chapter 10 in 1980. Since that time new regulatory overlays including FIRM flood hazard areas, National Wetlands Inventory, Oregon Division of State Lands Goal 5 Rule for protection of wetlands, and the ESA 4d rule have become applicable on and adjacent to the inventory sites selected in 1978-1980.</p> <p>LMD received a \$30,000 technical assistance grant from the Oregon Department of Land Conservation and Development (DLCD) to develop a preliminary evaluation of the 1978 plan. LMD worked in coordination with the Port of Siuslaw, Oregon Department of Land Conservation and Development and the U.S. Army Corp of Engineers. As a result of that effort, an addendum to the official DMDP site inventory was developed and adopted by the Board of Commissioners in September of 2007.</p> <p>While the DMDP update was being conducted, the Siuslaw Watershed Council contracted with Laura Brophy – Green Point Consulting for the completion of a report entitled the: <u>Tidal Wetland Prioritization for the Siuslaw River Estuary</u> in November 2005. The report summarized and ranked high value tidal wetlands that should be protected from dredging activities.</p> <p>After the completion of the addendum in 2007, LMD applied for a second grant with DLCD to help fund a second phase of the DMDP update. The intent of this second phase will be to integrate the Brophy analysis into the DMDP site inventory to produce a revised inventory of acceptable and allowable DMDP sites and recommend amendments to the current Dredge Plan for consideration by the co-adopters; City of Florence and Lane County and the implementing authorities; Port of Siuslaw and Army Corps of Engineers. This study would presumably result in the removal of ecologically sensitive DMDP sites and possibly, the addition of replacement sites in upland or other less sensitive areas.</p>			
Products/Objectives:			
<ul style="list-style-type: none"> ▪ Prioritize existing sites with significant Goals 5, 16 and 17 natural resources ▪ Identify existing sites that could be candidates for deactivation from the DMDP inventory ▪ Recommend upland sites as candidates to be designated as replacement sites ▪ Adopt a revised DMDP Inventory reflecting the prioritization and recommendations listed above 			
Project Partners:			
Port of Siuslaw, Army Corps of Engineers, Siuslaw Watershed Council, Oregon Department of Land Conservation and Development			
FMD Priority:	Medium	Coordinating Staff:	Miller
FTE Required:	0.40	Anticipated Timeline:	July – December 2008'

Proposed Project Title:			
C. e-Government Services Maintenance (GIS & internet)			
Project Description and Need:			
<p>Within the past two years, the Land Management Division has drastically changed way it conducts business. A major component in this positive transformation has been the increased use of internet technology as a platform for exchanging information, providing services and transacting with citizens. The LMD Planning Program has invested hundreds of staff hours and thousands of dollars developing online tools and information to assist the public.</p> <p>This work has included the creation and online publication of dozens of new forms, guidance documents, streamlined permit applications, schedules and agendas. In addition to this information, long-range staff with the assistance of the Public Works-GIS Program and Information Services, have developed several Geographic Information System (GIS) – based applications for use by both staff and the general public. To develop these tools, LMD's entire official map library was converted into a digital format. This involved the digitization and rectification of thousands of zoning and plan maps, greenway maps, coastal resource and hazard maps, special district maps and wildlife habitat, archeological and water resource inventories.</p> <p>The importance of LMD's GIS capability cannot be overstated. Staff widely acknowledges that the use of GIS has been the single largest advancement contributing to the efficiency and accuracy of their work since LMD began using personal computers.</p> <p>In December of 2007, LMD, PW-GIS and IS presented to the Board an application that enables the public to access LMD's newly developed digital maps over Internet. The tool, known as the <i>Zone & Plan Map Viewer</i>, has been steadily gaining in popularity and use by the public. At the December meeting, the Board directed staff to continue to develop the application to maintain its accuracy and functionality and to improve its interface and usability.</p> <p>For over a decade, LMD employed a full time cartographer to maintain its map library. Now that the library is digital, maintenance is simpler and maps can be amended much easier. However, upkeep of LMD's GIS capability will still require the dedication of some staff resources. In addition, other periodic updates to the LMD-Planning web pages will be required to maintain e-government services. Based on current demands, this work requires .20 FTE, minimum.</p>			
Products/Objectives:			
<ul style="list-style-type: none"> ▪ Maintain LMD's GIS functionality ▪ Expand and improve upon the <i>Zone and Plan Map Viewer</i> application ▪ Keep Planning related online resources current ▪ Develop new digital map layers as needed 			
Project Partners:			
Public Works – GIS, Information Services			
LMD Priority:	High	Coordinating Staff:	Miller
FTE Required:	0.20	Anticipated Timeline:	Ongoing

Proposed Project Title:			
D. Parks and Open Space Master Plan Update			
Project Description and Need:			
<p>In 2004, the Parks Division began an effort to update the 1981 Lane County Parks and Open Space Master Plan. An update of the 81' plan is necessary due to significant demographic shifts and changes in the demand for parks and outdoor recreational opportunities which have occurred since the plan was first adopted. In addition, a modern plan is a crucial tool which, could assist the County Parks Division work toward financial stability and provide adequate recreational facilities to meet public demand. Recreation is a key tourism component, and therefore, important to the County's economic development. Furthermore, an adequate and well planned park system provides residents a place to exercise, relax and enjoy clean air, thus promoting a healthier and happier population. For all of these reasons, an updated County Parks and Open Space Master Plan is not only prudent but a necessary ingredient in County government efforts to continue to promote a high standard of living for Lane County citizens and visitors.</p> <p>To date, a considerable amount of quality work has been completed towards the update effort: A technical advisory committee as been established, several draft chapters and appendices of the plan have been written and an extensive public involvement campaign has been undertaken. Staff in the Transportation Planning and Traffic Division (TP) have been assisting the Parks Division with the effort since 2004. Unfortunately, due to staff restructuring within TP, work on the plan has been sporadic. LMD has been asked by the Parks Superintendent and the TP Division Manager to assist in bringing the project to completion.</p> <p>The scope of LMD's assistance will likely include but not be limited to; finishing unwritten plan chapters, drafting new chapters as needed, composing findings of fact and conclusions of law and shepherding the updated plan through the post acknowledgement plan amendment process, including staffing hearings before the Planning Commission and the Board Commissioners.</p>			
Products/Objectives:			
<ul style="list-style-type: none"> ▪ Replace the outdated 1981 Lane County Parks and Open Space Master Plan; ▪ Comply with related state and local laws; ▪ Forecast and document public need and demand for recreation and open space resources; ▪ Develop corresponding goals, policies, and recommendations, consistent with the Parks Division Vision Statement; ▪ Present to the Board for adoption an updated Parks and Open Space Master Plan that will serves as both a reference and a compass for Lane County Parks Division and other public and private interests working with the Division. 			
Project Partners:			
Transportation Planning & Traffic Division, Parks Division			
LMD Priority:	High	Coordinating Staff:	Miller
FTE Required:	0.25	Anticipated Timeline:	July – November 2008'

Proposed Project Title:			
E. ODFW Coordination - Wildlife Habitat Conservation Management Program			
Project Description and Need:			
<p>Lane County participates in the Wildlife Habitat Conservation and Management Program (WHCMP). The WHCMP, administered by the Oregon Department of Fish and Wildlife (ODFW), is a cooperative effort involving state and local governments and other partners to help private landowners voluntarily conserve native wildlife habitat. The Oregon Legislature created the habitat program to offer an incentive for private landowners who want to provide wildlife habitat on their properties instead of, or in addition to, farming, growing timber or other land uses. Under the habitat program, land subject to an approved wildlife habitat conservation and management plan receives a wildlife habitat special assessment, where property taxes are assessed at the relatively low value that would apply if the land were being farmed or used for commercial forestry.</p> <p>The objective of the habitat program is to preserve, enhance or improve the composition, structure or function of habitat for native wildlife species. Prior to 2003 the habitat program was available only to rural landowners in Lane County with properties zoned for exclusive farm use forest use. House Bill 3616, in 2003, added land that is clearly identifiable as containing significant wildlife habitat. Now ODFW, in cooperation with the county, can select lands for eligibility based on zoning and/or significant native wildlife habitat.</p> <p>Participation in the program involves a minimum amount of staff time. Typically, less than ten hours per month. Work generally involves identifying or confirming the acreage, ownership and zoning requirements of identified properties. Occasionally, staff will draft maps to assist ODFW in their review of candidate properties.</p>			
Products/Objectives:			
<ul style="list-style-type: none"> ▪ Continue to coordinate with ODFW staff to review identified properties for conformance with the Wildlife Habitat Conservation Management Program standards 			
Project Partners:			
Oregon Department of Fish and Wildlife			
LMD Priority:	High	Coordinating Staff:	Miller
FTE Required:	0.5	Anticipated Timeline:	Ongoing – as requested

Proposed Project Title:			
F. Revised Riparian Protection Standards			
Project Description and Need:			
<p>Riparian protection standards found in Lane Code Chapter 16.253 regulate the clearing of vegetation along inventoried "Class 1" (fish bearing) streams and lakes. Under the current standards vegetation removal is regulated within 100' of ordinary high water (OHW) on lands zoned for resource use and within 50' of OHW on non-resource zoned land.</p> <p>LMD has been directed by Chair Stewart to place on its list of potential long-range work projects amendments to LC 12.253 that would modify current riparian protection standards to bring them more in line with the state safe harbor option for riparian setbacks outlined in the Oregon Administrative Rules. The proposed modifications would reduce the area regulated on resource zoned land from within 100' of OHW down to 75' and would increase the area regulated on non-resource land from within 50' of OHW up to 75'.</p> <p>Under the current standards, approximately 78,491 acres fall within the regulated riparian buffers around Class 1 streams and lakes. Under the proposed modified standards, approximately 61,956 acres would be regulated. The proposed amendment would constitute net reduction of 16, 535 acres of land regulated by the riparian protection standards of LC 16.253. However, the distribution of regulated land would shift impacting more area within rural residential, commercial and industrial zoned lands and fewer areas within farm and forest zoned lands.</p>			
Products/Objectives:			
<ul style="list-style-type: none"> ▪ Develop and bring to the Board for action amendments to Lane Code Chapter 16.253 that would modify streamside protection standards 			
Project Partners:			
To be determined			
LMD Priority:	Low	Coordinating Staff:	Miller
FTE Required:	0.15	Anticipated Timeline:	February - May 2009

Proposed Project Title:			
G. Community Rating System - Annual Coordination and Recertification			
Project Description and Need:			
<p>The Land Management Division, through the Planning and Building Programs, is responsible for implementing the National Flood Insurance Program (NFIP) for rural Lane County. As part of its responsibilities, LMD submitted an application to participate in the NFIP - Community Rating System (CRS) on February 29, 2008. The CRS is a voluntary, incentive based, sub-program of the NFIP that recognizes and rewards the floodplain management activities that communities undertake, which exceed the minimum NFIP requirements. Through participation in the CRS program, the flood insurance premiums for policy holders within participating communities can be lowered up to 45%, depending on strength the local flood program.</p> <p>The majority of communities that are admitted into the CRS program start off with a 5% reduction in premium rates. LMD's application is currently being reviewed and scored by FEMA. Based on our current flood program activities, LMD has received unofficial word that the County will qualify for admittance into the program and will start off with at least 5% reduction in rates and possibly, a 10% reduction.</p> <p>Once admitted into the program, the County will be required to take certain steps each year to maintain its membership. Steps typically involve submission of recertification materials demonstrating that the County is continuing to implement activities that have received credit. Communities that have chronic flood prone areas (known as repetitive loss areas) are required to carry out an annual outreach program. Lane County has several repetitive loss areas and will be required to develop and deliver tailored education materials to each area. LMD will also need to ensure that all of its day-to-day flood program procedures, forms and materials are current and consistent with NFIP standards.</p>			
Products/Outcomes:			
<ul style="list-style-type: none"> ▪ Maintain the County's membership in the Community Rating System. ▪ Ensure that the LMD flood program procedures are consistent with NFIP requirements ▪ Submit required CRS recertification documentation to FEMA ▪ Conduct required annual outreach project to repetitive loss areas 			
Project Partners:			
FEMA			
LMD Priority:	High	Coordinating Staff:	Miller
FTE Required:	0.15	Anticipated Timeline:	Ongoing

Proposed Project Title:			
H. Implementation of Flood Mitigation Strategies			
Project Description and Need:			
<p>Lane County has nearly 140,000 Acres of land in the floodplain. This is equivalent to nearly 220 square miles. Over 11,000 individual parcels are partially or entirely located within the floodplain. Statewide, Lane County has more river miles of floodplain than any other county.</p> <p>The <i>State of Oregon's Natural Hazard Mitigation Plan</i> indicates that Lane County's probability for a future flood event is high. According to the state plan, Lane County will likely face a major flood event in the next 10-35 years.</p> <p>In 2006, the Board of Commissioners adopted the <i>Lane County Natural Hazard Mitigation Plan</i>. The county's plan identifies several specific actions that can be taken which could reduce or alleviate the loss of life and property resulting from flooding. Many of the actions identified within the plan coincide closely with efforts to reduce flood insurance premiums through the Community Rating System effort (discussed in project G, above).</p> <p>Staff recommends undertaking action items identified within the <i>Lane County Natural Hazard Mitigation Plan</i> that would help reduce flood risks while simultaneously lowering citizen's flood insurance premiums. These include exploring mitigation actions for repetitive loss properties such as elevation or relocation, developing refined flood related GIS data sets such as a point file of all properties that have been issued Letters of Map Amendments (LOMA), and developing, mapping and documenting a prioritized culvert and storm water ditch maintenance program for chronic storm water related flood areas.</p>			
Products/Objectives:			
<p>Mitigate risks from flooding and improve flood insurance discounts by:</p> <ul style="list-style-type: none"> ▪ Developing needed GIS data sets: LOMA point file, storm water ditches and culverts layer ▪ Creating an inventory of areas subject to storm water flooding ▪ Exploring and developing mitigation actions for repetitive loss properties 			
Project Partners:			
Public Works, FEMA			
LMD Priority:	High	Coordinating Staff:	Miller
FTE Required:	0.30	Anticipated Timeline:	January – June 2009'

Proposed Project Title:			
I. Adoption of Dexter Public Facilities Plan			
Project Description and Need:			
<p>On June 15, 2005, the Board adopted Ordinance No. 1222. Adoption of the Ordinance was necessary to address requirements under Task 5 of the Lane County Periodic Review Work Program within the Middle Fork Willamette watershed. As a component of Work Task 5, Ordinance 1222 changed the status of the community of Dexter from a rural unincorporated community to that of an urban unincorporated community.</p> <p>Adoption of an urban unincorporated community status for Dexter placed the following obligation on the county: OAR 660-022-0050(1) "In coordination with special districts, counties shall adopt public facility plans meeting the requirements of OAR 660, Division 11, and include them in the comprehensive plan for unincorporated communities over 2,500 in population. A community public facility plan addressing sewer and water is required if the unincorporated community is designated as an urban unincorporated community under OAR 660-022-0010 and 660-022-0020. . . ."</p> <p>For the past several years, the design capacity of the Dexter Sanitary District system has been exceeded due to groundwater infiltration and inflows to the system due to leaking septic tanks and building sewers. On September 14, 2004, the Dexter Sewer District Board of Commissioners enacted Resolution No. 9-2004 imposing temporary moratoria on new sewer connections. All existing connections continue to be served. In February-March 2004, the District negotiated a Mutual Agreement and Order with the Oregon Department of Environmental Quality for a work program to correct the deficiencies in the sewer system in two phases. On February 10, 2004, the District approved a Resolution authorizing issuance of revenue bonds in the amount of \$300,000.00 to finance Phase I of the correction program.</p> <p>During Board deliberations for Ordinance No. 1222, staff recommended that coordination with the Dexter Sewer District and adoption of Dexter's public facility plan be postponed until after the completion of Phase I due to the moratorium and pending Phase I work program. At this time, Phase 1 is still not yet been complete and the moratorium is still in effect. If Phase I is completed within the first half of the 2008-2009 fiscal year staff could begin coordination with District to adopt facility plan sometime in the Spring of 2009.</p>			
Products/Objectives:			
<ul style="list-style-type: none"> ▪ Adoption of a public facility plan for the urban unincorporated community of Dexter consistent with OAR 660-022-0050(1) 			
Project Partners:			
Dexter Sanitary District			
LMD Priority:	Low	Coordinating Staff:	Miller
FTE Required:	0.15	Anticipated Timeline:	April– June 2008'

Proposed Project Title:			
J. OWEB Watershed Restoration Grants- Land Use Compatibility Review			
Project Description and Need:			
<p>The Oregon Watershed Enhancement Board (OWEB) is a state agency led by a policy oversight board. Together, they promote and fund voluntary actions that strive to enhance Oregon's watersheds. OWEB programs support Oregon's efforts to restore salmon runs, improve water quality, and strengthen ecosystems that are critical to healthy watersheds and sustainable communities. OWEB administers a grant program funded from the Oregon Lottery, federal funds and salmon license plate dollars. The grant program supports voluntary efforts by Oregonians seeking to create and maintain healthy watersheds.</p> <p>In Lane County, local watershed councils and soil and water conservation districts conduct numerous restoration projects each year. These projects are often funded wholly or in part by OWEB grants. To qualify for grant funding, applicants must demonstrate to OWEB that the proposed restoration projects do not conflict with local land use regulations. To address this requirement staff reviews grant applications for conformance with the rural comprehensive plan and advises the applicants of necessary requirements including, floodplain / floodway development permits, riparian modification requirements or greenway permits.</p>			
Products/Objectives:			
<ul style="list-style-type: none"> ▪ Continue to provide timely review and comment of restoration grants 			
Project Partners:			
Siuslaw, Long Tom, Middle Fork Willamette and McKenzie Watershed Councils, East Lane Soil and Water Conservation District and Siuslaw Soil and Water Conservation District			
LMD Priority:	High	Coordinating Staff:	Miller
FTE Required:	0.5	Anticipated Timeline:	Ongoing – as requested

Proposed Project Title:			
K. Coordination – Community Wildfire Protection Plan			
Project Description and Need:			
<p>On July 12, 2005 the Lane County Board of Commissioners signed Order No 05-7-12-1, adopting the Lane County Community Wildfire Protection Plan.</p> <p>A Community Wildfire Protection Plan (CWPP) is a collaborative, community-based forest planning and prioritization tool. CWPPs are developed by communities at risk from wildfire to help clarify and refine priorities for the protection of life, property, and critical infrastructure.</p> <p>The Lane County CWPP has three primary goals:</p> <ol style="list-style-type: none"> 1. Provide countywide leadership through partnerships to implement wildland urban interface fire mitigation strategies in Lane County. 2. Improve community strategies for reducing the impacts of wildland-urban interface fires. 3. Promote wildfire risk reduction activities for private and public lands in Lane County. <p>In the three years since the CWPP was adopted, substantial progress has been made. Coordinated efforts by partner agencies have helped to refine the understanding of wildfire risks within the county and to convey these risks to citizens. Rural land owners are now more informed of the threats posed by wildfire and are more aware of their shared responsibility in reducing these threats. Staff from the Oregon Department of Forestry (ODF), United States Forest Service (USFS), the Bureau of Land Management (BLM), the State Fire Marshals Office, Lane County Land Management, Lane County Emergency Management and several rural fire protections districts have successfully collaborated on a number of mitigation activities around the county. These agencies have also pursued new funding opportunities to help promote collaborative wildfire mitigation activities in the coming years.</p> <p>To support the CWPP effort Land Management's function has been twofold. First, staff have solicited Title II and Title III funding from Resource Advisory Committees (RACs) and the Board of Commissioners and facilitated the distribution of these funds. Second, LMD has helped develop and distribute wildfire education materials.</p>			
Products/Objectives:			
Continue to:			
<ul style="list-style-type: none"> ▪ Pursue Title II and Title III funding (if available) ▪ Distribute wildfire education materials to builders, developers and homeowners and maintain the CWPP website 			
Project Partners:			
Lane County Fire Defense Board, State Fire Marshal , Oregon Department of Forestry			
LMD Priority:	Medium	Coordinating Staff:	Miller
FTE Required:	0.05	Anticipated Timeline:	December - March 2009

Proposed Project Title:			
L. Eugene Springfield Metro Planning Coordination			
Project Description and Need:			
<p>Under State law, Lane County is partner to the decisions pertaining to any expansion of urban growth boundaries (UGB) or plan amendments within the Metro Plan Boundaries or UGBs of Eugene and Springfield and the ten small incorporated cities in Lane County. The Metro Plan decision process is coordinated among three jurisdictions, Lane County, the City of Eugene and the City of Springfield. The adoption of amendments to the Metro Plan text and diagram requires simultaneous coordinated decisions that include public involvement through notice and public hearings between Lane County and one or both of the cities for actions and amendments to move forward.</p> <p>Projects upcoming in 2008 in this category include the Permanent Replacement I-5 Bridge over the Willamette River (3 jurisdiction decision), Springfield Stormwater System Plan amendments to the Metro Plan Public Facilities and Services Plan (PFSP), a program specific refinement plan to the Metro Plan (2 jurisdiction decision), and final decision on the Delta Sand and Gravel Post Acknowledgement Plan Amendment (2 jurisdiction decision).</p>			
Products/Objectives:			
<ul style="list-style-type: none"> ▪ Coordinate Metro planning projects described above 			
Project Partners:			
Cities of Eugene and Springfield			
LMD Priority:	High	Coordinating Staff:	Schulz
FTE Required:	.30	Anticipated Timeline:	Ongoing

Proposed Project Title:			
M. Regional Water Resources Planning			
Project Description and Need:			
<p>LMD participates in a number of ongoing regional water resource planning activities. Staff serve on regional study groups and committees such as the Southern Willamette Valley Group study of groundwater issues in the Coburg area; Metro Waterways multi-jurisdictional study of floodplain and riverine habitat issues under federal jurisdiction through the Army Corps of Engineers in the metro area and tributaries of the Willamette–McKenzie Rivers; and the implementation of the Total Maximum Daily Load study. Continuation of these activities will require LMD staff participation in FY 2008-2009 including monthly participation in meetings for the Metro Waterways Study, and the 'upriver' Willamette Restoration Initiative ACOE projects. In addition to these ongoing projects, staff has also been asked to analyze possible policy options to address surface water runoff issues. This task would logically fall within this category of work.</p>			
Products/Objectives:			
<ul style="list-style-type: none"> ▪ Coordinate regional water resource planning as described above 			
Project Partners:			
Cities of Eugene and Springfield, ACOE			
LMD Priority:	High	Coordinating Staff:	Schulz
FTE Required:	.20	Anticipated Timeline:	Ongoing

Proposed Project Title:			
N. Special District Boundary Changes			
Project Description and Need:			
<p>The dissolution of the Boundary Commission by the state legislature required Lane County Land Management to work with other affected county departments (Annexation & Taxation and Elections, primarily) to develop processes, fees, and staffing for annexations, formations, dissolutions, and other changes to Special Districts identified and organized under ORS 198. In addition, all cities throughout the county must adopt processes for annexations, etc. to their own territory under ORS 222. In some cases, both city and county have a role in the interface area of special service districts that overlap with cities, such as Springfield Utility Board, Eugene Water & Electric Board, Willamalane, and the Metropolitan Waste Management Board. This project will require the ongoing review and processing of applications for changes throughout the county.</p>			
Products/Objectives:			
<ul style="list-style-type: none"> ▪ Coordinate special district boundary changes as described above 			
Project Partners:			
A&T and Elections			
LMD Priority:	High	Coordinating Staff:	Schulz
FTE Required:	.15	Anticipated Timeline:	Ongoing

Proposed Project Title:			
O. Small City Coordination			
Project Description and Need:			
<p>Land Management Division is required under state land use law to coordinate co-adoption of land use projects and proposals that affect the land and policies that apply within the Urban Growth Boundaries of any city. The ten small cities in the county are Dunes City, Florence, Veneta, Junction City, Coburg, Creswell, Cottage Grove, Lowell, Westfir and Oakridge. Several of these cities contract with LCOG for planning services, so coordination for city/county co-adoption can involve LCOG staff as well. Projects include UGB expansions, with and without rezoning of the subject property, amendments to refinement plans such as Transportation System and Coastal Resource Plans and text amendments to Lane Code Chapter 10.</p>			
Products/Objectives:			
<ul style="list-style-type: none"> ▪ Coordinate co-adoption of small city land use projects as needed. 			
Project Partners:			
Small Cities, LCOG			
LMD Priority:	High	Coordinating Staff:	Schulz
FTE Required:	.35	Anticipated Timeline:	Ongoing

Proposed Project Title:			
P. Lane Code Updates from the 2007 and 2008 Land Use Legislation			
Project Description and Need:			
<p>After each legislative session, the Land Management Division revises Lane Code Chapters 10, 13, 14 and 16 to comply with any changes made to the Oregon Revised Statutes (ORS) and the Oregon Administrative Rules (OAR).</p> <p>HB 2723 (2007) enacted standards and procedures for validating units of land that were created by a sale (i.e., the recording of a deed or land sales contract) if the unit of land could have complied with applicable land use regulations at the time it was sold or if the local government subsequently approved a dwelling on the property.</p> <p>HB 3629 (2008) was drafted in response to the Court of Appeals decision in <i>Phillips v. Polk County</i>. The bill authorizes counties to approve property line adjustments that result in the creation of substandard lots or parcels in specified circumstances.</p> <p>LMD is currently working on amendments to Lane Code to address Oregon Legislative Assembly revisions to the ORS in 2007. These proposed amendments have been reviewed by the Planning Commission and will be presented to the Board within the next two to three months. Not included in the 2007 updates are any changes to address HB 2723. Initial staff consensus was that this Bill could be addressed administratively without any amendments to Lane Code. This may not be the case. In addition, it appears that Lane Code Chapter 13 will be required to address HB 3629.</p>			
Products/Objectives:			
<p>To address these new pieces of legislation staff propose to:</p> <ul style="list-style-type: none"> ▪ Develop new provisions in Lane Code Chapter 13 to implement and comply with HB 3629 (property line adjustments). ▪ Analyze what amendments to Lane Code Chapter 13 might be required to comply with HB 2723 (retroactive validation of units of land). ▪ Conduct housekeeping and conforming amendments to Lane Code Chapter 13 definitions for consistency with ORS 92.010, HB 3629, and, potentially, HB 2723. 			
Project Partners:			
N/A			
LMD Priority:	High	Coordinating Staff:	Miller/Schulz
FTE Required:	.15	Anticipated Timeline:	Ongoing

Proposed Project Title:			
Q. Coordinated Population Projections			
Project Description and Need:			
<p>On February 13, 2008, the Board adopted Order No. 08-2-13-2 in the Matter of Rescinding Delegation to Lane Council of Governments Regarding Population Forecasting.</p> <p>The On April 30, 2008, the Board will conduct a public hearing to determine what actions, if any, the county will pursue concerning coordinated population forecasts. In a March 19, 2008, cover memo to the BCC the LMD Manager presented eight possible options to address population forecasts. All of the potential options would require some level of action from the Long-Range Planning program. Some of the options would impact staff more that others and it is estimated that up to 1.0 FTE may be required to conduct this work.</p>			
Products/Objectives:			
<ul style="list-style-type: none"> ▪ If applicable, carry out option selected at the April 30th public hearing 			
Project Partners:			
PW-GIS			
LMD Priority:	Low	Coordinating Staff:	Miller/Schulz
FTE Required:	Up to 1.0 FTE	Anticipated Timeline:	Unknown

Proposed Project Title:			
R. Policy review of HO Decision regarding replacement dwellings			
Project Description and Need:			
<p>On January 14, 2008, (initial decision) and January 29, 2008, (reconsideration) the Lane County Hearings Official issued decisions reversing the Planning Director's approval of a replacement dwelling in the EFU zone (tax lot 608 of map 18-05-08) (File No. PA 07-5572/Bottem/CBM Family LLC). A justification for the reversal is outlined in the Hearings Official's decision, included as "Exhibit 11" to this attachment.</p> <p>These decisions will likely result in the removal of a 1979 Oakbrook mobile home from the property, which has been occupied on site since 1980. It should be noted that the mobile home was placed without benefit of building permits. However, at the time that the mobile home was placed, the property was zoned (FF-20) Farm-Forestry District, 20 acre minimum lot size, and would have allowed a dwelling to be placed.</p> <p>The Hearings Official decision was appealed to the Board of Commissioners and on March 19, 2008, the Board chose not to conduct an on the record appeal hearing as recommended by the Planning Director.</p> <p>Land Management is recommending that the Board of Commissioners direct staff to process amendments to the General Provisions section of Lane Code Chapter 10 cited as justification for Hearings Official's decision.</p>			
Products/Objectives:			
<ul style="list-style-type: none"> ▪ Modify the General Provisions section of Lane Code Chapter 10 Lane Code to eliminate or modify language referring to building permits 			
Project Partners:			
N/A			
LMD Priority:	Low	Coordinating Staff:	Miller
FTE Required:	.05	Anticipated Timeline:	May-June 2008

Proposed Project Title:			
S. Concurrent processing of building permits & final land use decisions			
Project Description and Need:			
<p>Residents seeking to develop and build property in Lane County must obtain necessary land use approvals, on site sanitation permits and building permits. Current procedures and practices dictate that land use approvals must be obtained before applicants apply for building permits. This chronology is generally appropriate because land use regulations often impact the siting standards and even the specific design requirements of structures. In the majority of cases, land use approval can be obtained the same day that building permits are applied for if no special use permits are required.</p> <p>Commissioner Fleenor requested that LMD investigate possible strategies that could enable both building and planning permits to be processed concurrently when a special use permit is required.</p>			
Products/Objectives:			
<ul style="list-style-type: none"> ▪ Investigate and develop possible strategies to process building and land use approvals concurrently 			
Project Partners:			
LMD Building Program			
LMD Priority:	Low	Coordinating Staff:	Miller
FTE Required:	.05	Anticipated Timeline:	March 2009

Proposed Project Title:			
T. Measure 49 Referrals			
Project Description and Need:			
<p>In November 2007, voters approved Measure 49, which modified Measure 37. The Oregon Department of Land Conservation and Development (DLCD) is authorized under M49 to evaluate existing M37 claims.</p> <p>DLCD is currently in the process of mailing option election packets to valid M37 claimants. Claimants will need to indicate which of the options under M49 that they will pursue. Claimants will also be required to undergo a "supplemental review" to ensure that their chosen option is possible under M49. As part of that supplemental review process Lane County will need to provide research assistance to DLCD regarding historical zone designations and development criteria. LMD has been working with DLCD to establish a library of historical County ordinances. It is anticipated that this work will continue and increase as the 300+ valid M37 claimants in Lane county begin to work through the machinations of M49 at the state level. In addition to identifying historical zone designations and development criteria, DLCD will also need assistance obtaining accurate notice lists of surrounding properties as well as Assessor's information.</p>			
Products/Objectives:			
<ul style="list-style-type: none"> ▪ Provide historical zoning ordinance research to DLCD as needed ▪ Provide Assessor's card and information concerning contiguous ownership ▪ Provide buffered mailing lists for notice purposes 			
Project Partners:			
DLCD - M49 Program			
LMD Priority:	High	Coordinating Staff:	Howe/Miller
FTE Required:	.20	Anticipated Timeline:	Ongoing – as requested

Attachment D: Prioritization Analysis Worksheet

Directions:

The use of this worksheet is optional. It is provided only to assist the Board in the project prioritization process. The Board may rank projects by importance (1-20) or they may delete projects completely and/or suggest alternate projects. LMD will undertake the highest ranked projects permitted by staff resources, currently 2.4 FTE. If additional resources become available, or if projects are completed ahead of schedule, progress down the prioritization list.

Project Name	Required FTE	Staff Priority Recommendation
A. Drinking Water Source Protection Ordinance	0.10	High
B. Dredged Material Disposal Plan Update - Phase II	0.40	Medium
C. e-Government Services Maintenance (GIS & internet)	0.20	High
D. Parks Master Plan Adoption	0.25	Medium
E. ODFW Coordination Wildlife Habitat Conservation Management Program	0.05	Medium
F. Revised Riparian Protection Provisions	0.15	Low
G. Community Rating System - Annual Coordination and Recertification	0.15	High
H. County Flood Mitigation Plan Phase 1	0.30	High
I. Adoption of Dexter Public Facilities Plan	0.15	Low
J. OWEB Grant Projects - Land Use Compatibility Review	0.05	High
K. Grant Writing & Coordination - Community Wildfire Protection Plan	0.05	Medium
L. Eugene Springfield Metro Plan	0.30	High
M. Regional Water Resources Planning	0.25	Medium
N. Special District Boundary Changes	0.15	High
O. Small City Coordination	0.35	High
P. Lane Code Updates from 2008 Land Use Legislation	0.15	High
Q. Coordinated Population Projections	1.00	Low
R. Policy review of HO Decision regarding replacement dwellings	0.05	Medium
S. Concurrent processing of building permits & final land use decisions	0.05	Low
T. Measure 49 Referrals	0.20	High

Leafwood Water Association
36187 Enterprise Rd.
Creswell, OR 97426

April 3, 2008

EXHIBIT 1 P. 1 of 1
~~FILE #~~ _____

Faye Stewart, Chair
Lane County Board of Commissioners
125 East 8th Avenue
Eugene, OR 97401

Dear Commissioner Stewart:

Leafwood Water Association supports the recommendation that county-wide drinking water protection be included as part of the long-range planning being proposed via Lane County Land Management.

We are a fourteen-member cooperative located just south of Pleasant Hill. As rural areas become more densely populated, we fear that lack of source water protection will adversely affect the drinking water quality and may result in health risks.

People tend think of water supply and quality only when they turn on the tap and no water comes out, or it looks or smells funny. As the number of single-owner wells increases in rural areas, we increase the likelihood of contamination to the ground water in the region. One careless, unknowledgeable act near one well head jeopardizes many households.

How much education do people receive about source water from developers or real estate agents as they move from urban areas to rural areas? In our own little system, we have faced this situation a few times: teaching new neighbors everything about what NOT to do in order to keep clean water available to the rest of the neighborhood.

We earnestly hope the Board of Commissioners considers the value of well-head protection and source water education and the resultant effects on public health.

Sincere regards,



Valerie Oberg Wheelock
Vice President/Secretary
(541) 726-9049

Cc: Keir Miller, County planner



Oregon

Theodore R. Kulongoski, Governor

Department of Human Services

Health Services

Drinking Water Program

444 A Street

Springfield, OR 97477

(541) 726-2587 Ext. 24

FAX (541) 726-2596

TTY-Non Voice (503) 731-4031

EXHIBIT 2 P. 1 of 2
~~FILE #~~ _____

April 7, 2008

To: Chair, Faye Stewart
Lane County Board of Commissioners

From: Tom Pattce, R. G.
Natural Resource Specialist
Drinking Water Program
Oregon Department of Human Services

Subject: Lane County Staff Proposal for Drinking Water Protection Efforts

The Oregon Department of Human Services Drinking Water Program would like to express it's support for the Lane County staff proposal regarding county-wide drinking water protection efforts. Furthermore, we would encourage the Lane County Board of Commissioners to give this proposal a high ranking for the 2008-09 budget year. Our reasoning is as follows:

As you are aware, there are approximately 272 public water systems in Lane County, each with its own identified Drinking Water Source Area. The vast majority of these Drinking Water Source Areas (in whole or in part) are located outside the jurisdictional control of the local water system. Therefore, county government is in a unique position to provide a public health benefit to county residents by implementing protection strategies aimed at integrating drinking water protection concerns into county activities. Such efforts are important because, although federal requirements have been established regarding maximum contaminant levels and sampling frequency, currently there are technical and financial limits on the type and amount of contaminants that can be removed from a contaminated water supply. Therefore, the Drinking Water Program would encourage the public water systems and Lane County to work in coordination with each other to minimize the probability that a contamination event would occur within any of the County's Drinking Water Source Areas.

The Lane County staff proposal would be a benefit to all public water systems within the county by integrating drinking water protection into the land use planning process and enhancing the opportunity for public water system personnel, and/or their customers, to comment on land use changes during the public comment period. In addition, by providing educational materials, the county would play an important role in helping residents understand the current *"Assisting People to Become Independent, Healthy and Safe"*

An Equal Opportunity Employer
If You Would Like This In An Alternate Format,
Please Call Dennis At (541) 726-2587 ext. 21

and future value of a county-wide resource during an era when growth is believed to further restrict or stretch available supplies.

Should the Board of Commissioners decide to give the staff proposal a high priority, the Department of Human Services Drinking Water Program is prepared to support county staff efforts by providing:

- Annual updates of drinking water source areas for groundwater systems,
- Assistance with development of educational materials, and
- Input on the types and number of potential contaminant sources present within the county and their relative risk to drinking water supplies.



SPRINGFIELD UTILITY BOARD

MAIN OFFICE 250 A Street, PO Box 300 Springfield, OR 97477-0077 Tel 541.746.8451 Fax 541.746.0230 TDD 541.744.3659 www.subutil.com

April 2, 2008

Chair Faye Stewart
Lane County Board of Commissioners
125 East 8th Avenue
Eugene, OR 97401

**SUBJECT: SUPPORT FOR LONG-RANGE PLANNING DRINKING WATER PROTECTION
WORK PROGRAM**

Dear Chair Stewart:

The Springfield Utility Board (SUB) draws its drinking water supply from both groundwater and surface water. Because approximately 40% of our groundwater recharge area and 99% of our surface water source area lie outside of the geographic boundaries of the City's regulatory authority, we look to inter-governmental collaboration, voluntary programs, and community education to help protect our water supply.

The proposed drinking water protection work program would take advantage of opportunities for inter-governmental collaboration to protect an invaluable resource throughout all of Lane County. First, developing a county-wide drinking water source area map will create a lasting tool for educating planners, developers, and community members about the locations of these sensitive areas. Awareness of drinking water source areas can inform the decision-making process and help reduce potentially adverse impacts. Second, notifying public water systems of proposed development activity that falls within their source areas would help water systems plan for and possibly mitigate against potential threats to source water quality.

SUB is committed to serving as a partner in this effort and will contribute staff time toward the work program. We plan to assist County staff in developing the notification system and to generally provide staff support where necessary. Because SUB has an established drinking water education program, we can provide technical assistance for developing educational materials as well as contacts and venues for targeted distribution. We welcome the opportunity to use our existing outreach program to introduce Lane County as a partner in source water protection.

There are many opportunities to pool our resources for the sake of more efficient and effective source water protection. For example, in addition to working with staff from the Land Management Division, we also hope to work with the Emergency Management office to explore opportunities for expanded spill response notification. In all cases we hope to

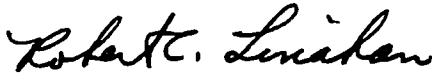
Chair Faye Stewart
Lane County Board of Commissioners
April 2, 2008
Page 2

EXHIBIT 3 P. 2 of 2

bolster our contribution of staff time by seeking grant opportunities to help support these joint efforts.

The drinking water protection work program proposal represents the interests and concerns of public water systems throughout Lane County. The proposed actions are straightforward and designed to benefit all source areas. We hope the Board of County Commissioners will support this program as a high priority.

Sincerely,



Robert C. Linahan
General Manager

CHINITZ Amy C.

From: Mike Howard [mike.howard@centurytel.net]
Sent: Monday, April 07, 2008 3:21 PM
To: Faye.Stewart@co.lane.or.us
Cc: CHINITZ Amy C.
Subject: Drinking water protection

Dear Mr. Stewart

I am the water plant operator for the City of Creswell. I am responsible to provide clean, safe, and plentiful drinking water to over 4500 of the city's residents.

The Lane County Land Management Division long-range planning group will be presenting its 2008-09 fiscal year work plan to the Board of County Commissioners (BCC) on Tuesday, April 29. They will present 21 projects for the BCC to rank in priority order. Countywide drinking water protection will be one of those 21 projects. County staff has already received a recommendation from the Lane County Planning Commission to move forward with exploring opportunities for County involvement in drinking water protection.

As a water plant operator, I recommend that the County begin by focusing on the following actions:

1) *Integrate Drinking Water Protection into County Land Use Process*

- Develop a county-wide map showing drinking water source areas
- Notify public water systems of proposed development activity that falls within their source areas

2) *Promote Drinking Water Source Protection Education*

- With the public water systems, develop educational materials that address drinking water protection topics and raise awareness about the importance of protecting source water areas. Distribute materials to developers, residents, and others through the web site, front counter, and mailings.

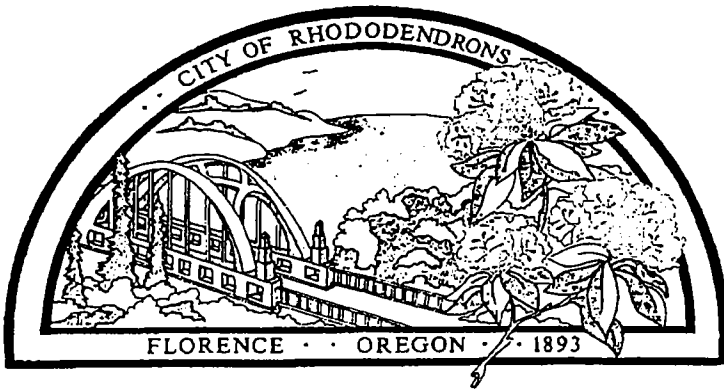
3) *Explore Feasibility of Future Drinking Water Protection Efforts*

It is clear that these actions could provide tremendous help to public water systems in protecting our drinking water source areas.

Thank you for your time and consideration.

Sincerely

Mike Howard
City of Creswell
Water plant operator.
541-895-4044



City of Florence

Public Works Department

250 Hwy 101 North
Florence, Oregon 97439
Public Works: (541) 997-4106
FAX: (541) 902-1333

April 4, 2008

EXHIBIT 5 P. 1 of 2
~~FILE~~

Chair Faye Stewart
Lane County Board of Commissioners
125 East 8th Avenue
Eugene, OR 97401

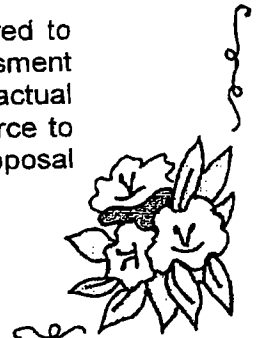
RE: County-wide Drinking Water Protection

Dear Chair Stewart:

As a drinking water professional with over 23 years of service, I would like to extend not only my support, but that of the City of Florence to the efforts of the Lane County Land Management Division long-range planning group's efforts in developing a County-wide drinking water protection program. The proposal as presented by County staff is to:

- 1) *Integrate Drinking Water Protection into County Land Use Process*
 - Develop a county-wide map showing drinking water source areas
 - Notify public water systems of proposed development activity that falls within their source areas
- 2) *Promote Drinking Water Source Protection Education*
 - With the public water systems, develop educational materials that address drinking water protection topics and raise awareness about the importance of protecting source water areas. Distribute materials to developers, residents, and others through the web site, front counter, and mailings.
- 3) *Explore Feasibility of Future Drinking Water Protection Efforts*

Under the 1996 Amendments to the Safe Drinking Water Act, states were required to complete Source Water Assessments by 2003. Under the Source Water Assessment Program all water systems in the US are required to compile an inventory of all actual and potential sources of pollution, rank the vulnerability of the drinking water source to the pollution and recommend protection efforts for the source water area. The proposal from County staff takes us to the next step in the process.



5-282

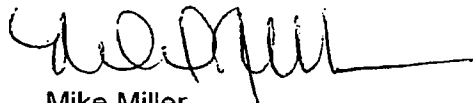
As a professional committed to safe drinking water, I recognize the importance of working together with other professionals to protect the sources of our drinking water. As a City that relies upon a sole source aquifer to provide its citizens with high quality drinking water, impacts from land uses on properties both inside and outside the City can pose a threat to water quality. As the population grows and the City and County areas develop, drinking water protection should be integrated into land-use planning and stewardship; road, sewer and water projects; agricultural, industry and development practices; waste disposal methods; watershed planning and protection; and the routine decisions that our citizens make every day.

By working together, we will be able to combine our strength and knowledge to encourage actions that:

- Prevent contamination of our drinking water supplies from pesticides, fertilizer, industrial waste, petroleum by-products and other run-off.
- Promote development practices that limit threats to the integrity of lakes, rivers, groundwater and water recharge areas.
- Preserve the land needed to protect the quality of current and future sources of drinking water.

Our challenge is for communities concerned about clean and safe water is to move beyond the 2003 assessments to real protection of drinking water sources. I am hopeful that this project will provide us the information, tools and support to promote source water protection activities within our County.

Sincerely,



Mike Miller
Public Works Director



Southern Willamette Valley Groundwater Management Area

99 E. Broadway, Suite 400 Eugene, OR 97401
<http://groundwater.oregonstate.edu/willamette/>

Groundwater Management Area Committee Members

Annabelle Jaramillo/
Linda Modrell
Benton Co. Commissioners
Rick Partipillo
Linn Co. Environmental Services
Faye Stewart
Lane Co. Commissioner
Judy Volta
Mayor of Coburg
Tim Bunnell
Harrisburg Community Dev. Superintendent
Dennis Boeger
Poage Engineering
Frank Wright
Citizen and Small Business Representative
George Pugh
Linn County Farmer
Karen Strohmeier
Cascade Pacific RC&D
Lanny Zoeller, Chair
Realtor
Pat Straube
Citizen and CAFO Representative
Rich Margerum
Long Tom Watershed Council
Roger Haffner, Vice Chair
Wilbur-Ellis Farm Supplements
Jerry Marguth
Lane & Benton County Farmer
Jim Anderson
Truck 'n' Travel
Sue Lurie
Natural Resources Representative

Cooperating Organizations

OR Department of Environmental
Quality
Lane Council of Governments
Oregon State University Extension
Service
OR Department of Agriculture
OR Department of Human Services
OR Water Resources Department
OR Dept of Land Conservation and
Development
Benton County
Linn County
Lane County
City of Coburg
City of Harrisburg
City of Junction City
City of Monroe
Long Tom Watershed Council
Rural Community Assistance
Corporation
Resource Assistance for Rural
Environments

April 2, 2008

Chair, Faye Stewart
Lane County Board of Commissioners
125 East 8th Avenue
Eugene, OR 97401

I am writing this letter on behalf of the Southern Willamette Valley Groundwater Management Area (GWMA) Committee. As Chair of the Committee I would like to express our support and absolute commitment to participate in the County's proposal that focuses on drinking water protection. The intent of the County-wide drinking water protection proposal includes many activities that the GWMA Committee has been directly involved with. We want to ensure the Lane County Board of Commissioners that water quality protection in this region is our primary objective and we see this project as a necessary step towards this goal.

The GWMA Committee was brought together in response to high nitrate levels in groundwater. In addition to addressing nitrate, with the help of 51 public water systems in the GWMA we also are addressing other potential risks to our drinking water supply. The Southern Willamette Valley GWMA contains almost 70 square miles of land under Lane County's jurisdiction. Within this area are two small cities, Coburg and Junction City., and over 6 square miles of area zoned for rural development. Research completed during the development of the GWMA Action Plan indicated that many domestic and public wells within this area are heavily contamination with nitrate.

The GWMA Committee understands the urgency of moving forward to identify and begin implementing valid, feasible methods to protect groundwater in the region. As residents, public officials, farmers, and business owners in this area, we are very concerned about the health risks presented to public water systems from contamination of the groundwater. We are committed to finding solutions, educating area citizens about the issue, providing resources to citizens, businesses, and local governments to address this issue, and monitoring the effectiveness of implemented strategies.

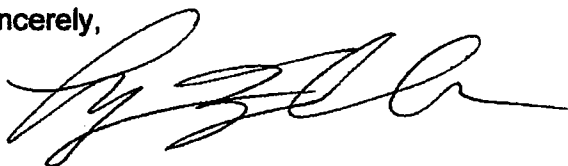
As in the entire GWMA, many public water systems in Lane County are working hard to protect their drinking water source areas, but most cannot do it alone. Lack of jurisdictional authority prevents many communities from comprehensively protecting their source waters. For example, the City of Coburg has no authority over its drinking water source area. Effective source water protection requires the combined efforts of many partners. Lack of sufficient resources is often an obstacle to comprehensive source water protection. The public water systems who participated in the meeting recognized that limited resources are a significant obstacle for Lane County as well. By taking a consolidated, county-wide approach to source water protection, significant results can be gained by pooling our resources and making the best use of existing resources.

We urge you to join us in supporting the Land Management Division proposal which would: help integrate drinking water protection into the County land use process; promote drinking water source protection; and explore the feasibility of future drinking water protection efforts. The Committee, along with many agency partners, has already dedicated a lot of time and resources over the past four years towards this objective. We will continue to work towards this goal by assisting our partners in any way we can.

We look forward to working with Lane County towards our common purpose – clean drinking water for our residents.

Thank you for considering our letter of support.

Sincerely,



Lanny Zoeller, Chair
Southern Willamette Valley Groundwater Management Area Committee



April 1, 2008

Faye Stewart, Chair
Lane County Board of Commissioners
125 East 8th Avenue
Eugene, OR 97401

Dear Commissioner Stewart:

This letter is to express support of the Lane County Land Management staff proposal for exploring county-wide drinking water protection. Over the past 10 years, Lane Council of Governments (LCOG) has assisted several of the small cities in the County to develop drinking water protection plans. A consistent issue with all of the cities, including Veneta, Dunes City, Coburg, and Junction City is that much of their drinking water source area extends beyond city jurisdiction and is out of their control. Although some of that land area is in agricultural or forestry use, much of it is under the authority of Lane County. Rather than these cities and the 200 plus other public water systems coming to the County Board of Commissioners individually asking for measures the County can take to help protect their public water supply, it makes sense to protect these areas through one concerted effort.

LCOG has also been a lead partner in the Southern Willamette Valley Groundwater Management Area (GWMA). As you know, the Action Plan for the GWMA was developed by a broad community-based group of stakeholders. The Action Plan identifies strategies to reduce nitrate, the known contaminant of concern. In addition, the 51 public water systems in the GWMA helped to identify strategies to address other potential risks. The three core actions outlined by County staff to address Lane County concerns are also focus areas for the GWMA. This work would go a long way towards protecting not only public water supplies, but also private wells within the source water protection areas.

With County staffing resources always stretched thin, this seems to be a good opportunity to maximize efforts by capitalizing on the resources being offered by

Letter to Commissioner Stewart
April 1, 2008
Page 2

partnering agencies. LCOG will be receiving grant funds in the coming year that can:

- ▶ Help develop a county-wide map showing drinking water source areas;
- ▶ Help develop educational materials addressing drinking water protection topics; and
- ▶ Lay out the options and analysis of future drinking water protection efforts.

We look forward to working with your staff on this important effort.

Sincerely,



George Kloeppel
Executive Director

cc: Commissioner Bobby Green
Commissioner Bill Dwyer
Commissioner Peter Sorenson
Commissioner Bill Fleenor



Oregon

Theodore Kulongoski, Governor

Department of Environmental Quality

Western Region Eugene Office

1102 Lincoln Street, Suite 210

Eugene, OR 97401

(541) 686-7838

FAX (541) 686-7351

TTY (541) 687-5603

EXHIBIT 8 of 2
FILE

April 8, 2008

Chair Faye Stewart
Lane County Board of Commissioners
125 East 8th Avenue
Eugene, Oregon 97401

Re: Lane County Drinking Water Protection

Dear Chair Stewart:

The Oregon Department of Environmental Quality's Drinking Water Protection Program supports the interest of Lane County public water systems in promoting county-wide measures which can help protect drinking water resources. Healthy drinking water is essential to the economic viability and livability of our communities, yet many of our groundwater and surface water systems that supply drinking water are vulnerable due to sensitive geology and soils, and contamination from specific land-use practices. As the population of our area increases, the demand for clean water and the risk of contamination also rise, further elevating the importance of long-term drinking water protection.

Public drinking water protection in Oregon is a voluntary process which relies heavily on concern and action at the local level. While Oregon's public water systems have done an excellent job over the years in ensuring the delivery of safe water to residents, the cost of treatment is high, funds to upgrade treatment are limited, and there is a continued threat from a wide variety of potential contaminant sources, including new risks from emerging contaminants such as personal care products and pharmaceuticals. The actions proposed by Lane County water systems highlight the important role that county officials and staff can play in helping to reduce these and many other risks to water systems. These actions will reap real benefits, not only at the local level, but regionally and beyond.

Integration of drinking water protection into county land-use processes

The incorporation of drinking water protection tools into county land-use planning efforts will ensure that drinking water is given the attention it merits as a public health issue. The availability of maps depicting locations of drinking water source areas, and the possible use of this information as a public health and safety overlay or ordinance could help ensure that potential impacts to drinking water are identified and addressed in a timely fashion. Unfortunately, the majority of the land area which supplies local drinking water is often outside of a water provider's jurisdiction. In most cases, water systems are not advised of proposed land-use actions which could negatively impact drinking water quality. Notification of land-use



DEQ-DC1

proposals in drinking water source areas offers public water systems a critical opportunity to identify threats early on, and help craft workable solutions.

Promote drinking water source protection education

The County can play an instrumental role in collaborating with state and local drinking water groups to share information with realtors, developers, business owners, and residents about water quality protection and the location of sensitive drinking water source areas. Outreach and education are powerful means of enhancing awareness of drinking water threats and eliciting behavioral shifts that foster protection.

Explore feasibility of future drinking water protection efforts

County officials and staff have a comprehensive understanding of land-use issues in the region and would be critical stakeholders for discussing the feasibility of long-term drinking water protection measures for area residents. A number of communities across the state have voluntarily instituted drinking water protection measures including watershed purchases, increased riparian buffers, memoranda of understanding, overlays, and ordinances. With the County's help, state and local partners can build on these examples to develop strategies that address existing gaps in protection and fully integrate drinking water concerns into long-range watershed and land-use planning work.

DEQ's Drinking Water Protection Program has a wealth of information available to help with this effort including factsheets, maps of drinking water source areas, and GIS layers including access to data on potential contaminant sources and locations. We can also provide technical assistance and public outreach and education services to communities and water systems.

DEQ is in full support of the drinking water protection measures proposed by Lane County public water systems and we appreciate your concern and thoughtful consideration of these recommendations. We look forward to collaborating with the County on this very important community issue.

Sincerely,

Jacqueline Fern

Jacqueline I. Fern
Drinking Water Protection Specialist

Dave Belyea

Dave Belyea, Manager
Regional Environmental Solutions





EXHIBIT 9 P. 1 of 1
FILE # _____

Cottage Grove



Community Development

400 Main Street
Cottage Grove, OR 97424

(541) 942-3340
Fax 942-1267
www.cottagegrove.org
E-mail: planning@cottagegrove.org

April 8, 2008

Re: County-wide Drinking Water Protection

Dear: Commissioner Faye Stewart, Chairman & Lane County Board of Commissioners:

This letter is to inform you of the City of Cottage Grove's support for a County-wide drinking water protection effort. The City of Cottage Grove gets its drinking water from the Row River, the water for the entire City is provided from this one surface water source. Our water is taken from the Row River, just as it enters the City limits, consequently protection at a County-wide level will be a fundamental aspect to protecting our drinking water source for the future.

The three actions that have been identified by key stakeholders from different jurisdictions throughout the County are important to our City. The creation of a map will enable County staff to be aware of areas that are within our City's drinking water source area, and with improved notification, City officials will be able to comment on potentially undesirable development occurring within that area. By promoting drinking water source protection education, drinking water sources across Lane County can be protected for people of every jurisdiction for the present and the future. We also believe as time passes, it will be important to explore and expand options for future drinking water protection efforts.

Thank you for your consideration of the County-wide drinking water protection program! The collaborative actions presented to you will be beneficial to protecting water quality on the Row River, the City of Cottage Grove's drinking water source, as well as drinking water sources for citizens throughout Lane County.

The City of Cottage Grove is in support of the County-wide efforts to ensure a safe and viable source of drinking water for our community's future generations.

Respectfully,

Howard Schesser
Community Development Director &
Emergency Program Manager

cc: file



Eugene Water & Electric Board

500 East 4th Avenue / Post Office Box 10148
Eugene, Oregon 97440-2148
541-484-2411 Fax 541-484-3762

EXHIBIT 10 P. 1 of 1

April 7, 2008

Chair Faye Stewart
Lane County Board of Commissioners
125 East 8th Avenue
Eugene, OR 97401

Re: Lane County Support for Drinking Water Source Protection

Dear Chair Stewart:

The Eugene Water & Electric Board (EWEB) supports a County-wide drinking water protection effort as recommended by the consortium of public water systems in Lane County and the Lane County Planning Commission. The City of Eugene relies on the McKenzie River as its sole source of drinking water for over 200,000 residents. In 2001, EWEB began implementation of a drinking water source protection program in an effort to safeguard this pristine resource from long-term degradation. However, in order to be successful, source water protection requires active partnerships with businesses, academia, K-12 schools, local, state and federal governments and the public.

Lane County is already active in working with water providers around planning for emergencies that may threaten a water supply (hazardous material spills, wildfires, etc.), conducting household hazardous waste collection events and removing old agricultural chemicals from drinking watersheds, and assisting with septic system inspection and maintenance efforts in the McKenzie. This initiative focuses on opening channels of communication and promoting cooperation between Lane County and community water providers around the area of land use and development.

The majority of the source areas for municipal and community water systems are located outside of urban areas on County-zoned land, making Lane County a critical partner for protecting the area's water supply. We agree with the County planning staff's recommended actions:

- Integrate drinking water protection into County land use process;
- Promote drinking water source protection education; and
- Explore feasibility of future drinking water protection efforts.

EWEB understands the constraints on County resources and staff time, but feels this effort would have minimal impact on the County's budget. To further minimize this potential impact, EWEB pledges to dedicate staff time and resources to help with this project and provide up to \$10,000 to reimburse County staff time involved in this effort. We are looking forward to working with the County on this important project. EWEB places a high priority on source water protection and we would value a long-term partnership with Lane County to better integrate source protection into the County's land use process. If you have any questions or need additional information, please feel free to contact me at 541-341-8552 or karl.morgenstern@eweb.eugene.or.us.

Sincerely,

Karl Morgenstern
Eugene Water & Electric Board
Drinking Water Source Protection Coordinator